

Petoskey Pennsylvania Park Master Plan

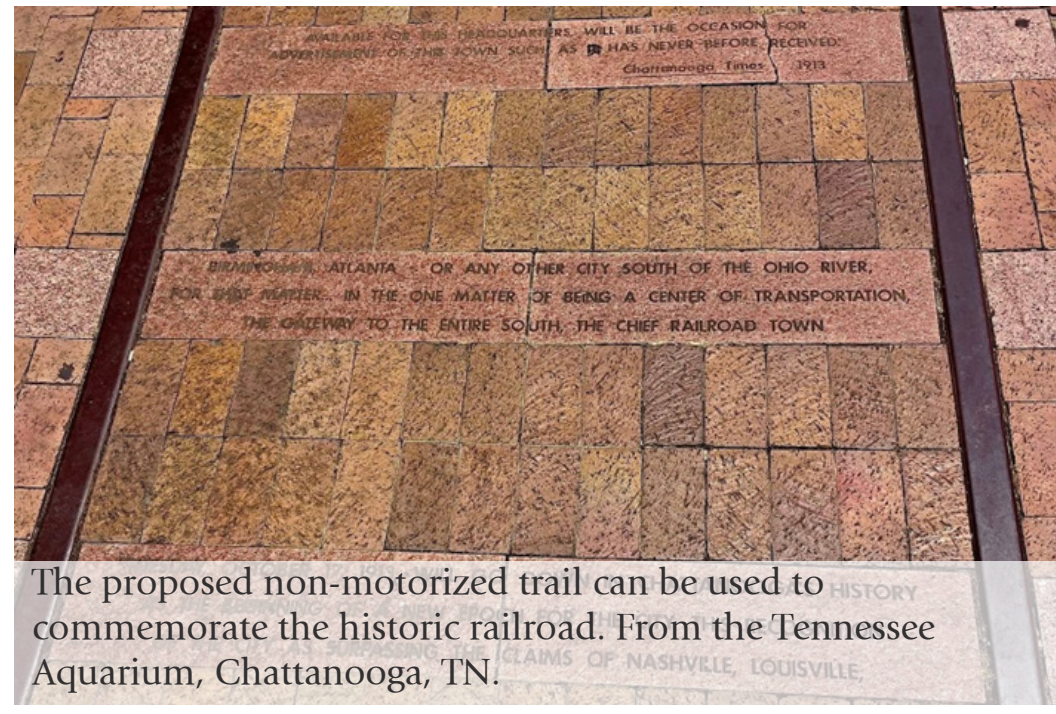


PRECEDENT IMAGES

1 NON-MOTORIZED PATHWAY



This image of an existing footpath in Parc de Bercy in Paris, France

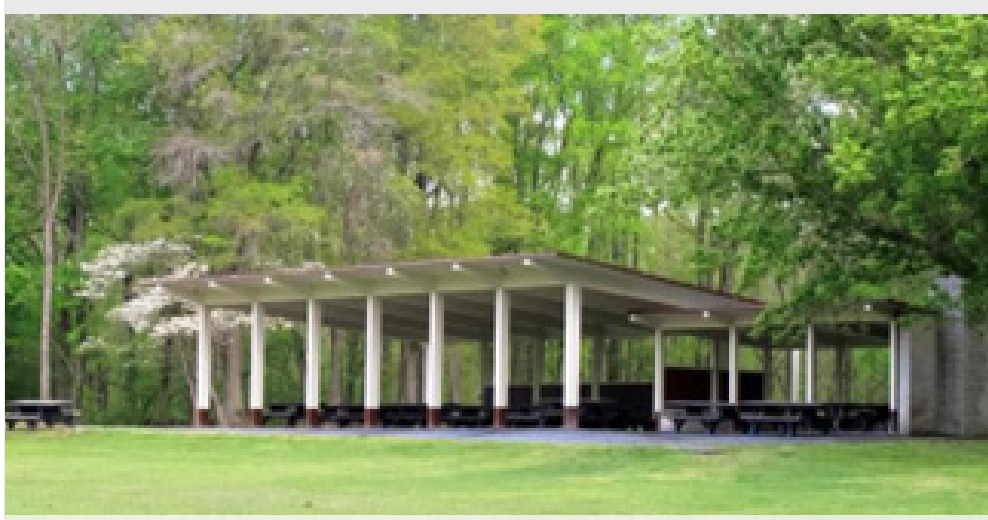


The proposed non-motorized trail can be used to commemorate the historic railroad. From the Tennessee Aquarium, Chattanooga, TN.

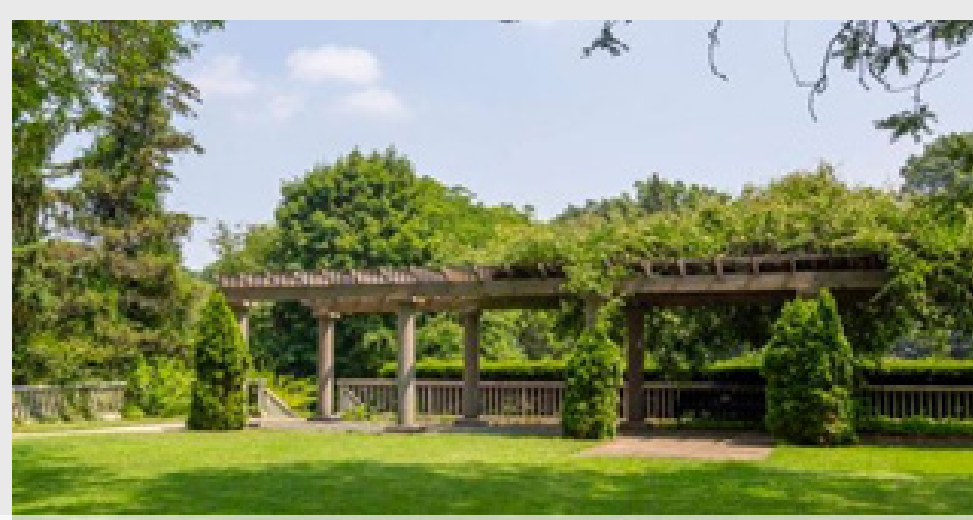


Depiction of trail route atop railway.

2 ENTERTAINMENT AND PICNIC SHELTER



Proposed pavilion should not be excessively sized and should blend into the natural park setting.



Proposed pavilion may borrow from the historic architecture of the Cushman Building. (Little Traverse Historical Society Collection)



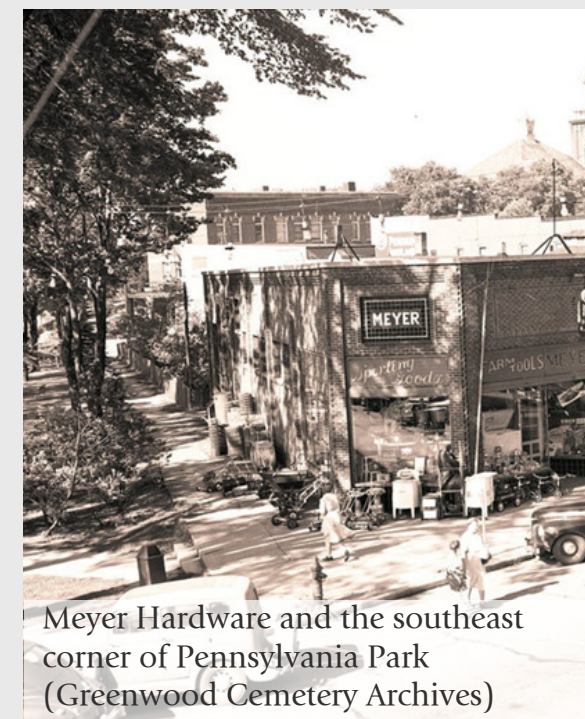
Depiction of proposed pavilion

4 CHRISTMAS TREE PLAZA



5 INTERPRETIVE SIGNAGE - PENNSYLVANIA PARK HISTORY

These images are a small sampling of the rich pictorial history of Pennsylvania Park that is only currently available that could be displayed in the park.



Meyer Hardware and the southeast corner of Pennsylvania Park (Greenwood Cemetery Archives)



Pennsylvania Park Summer House (Greenwood Cemetery Archives)



Interpretive signs can be simple and discreet or larger focal points. This historical interpretive sign for Jones School in Ann Arbor allows the present-day building to be viewed through a glass pane printed with the historic building façade.

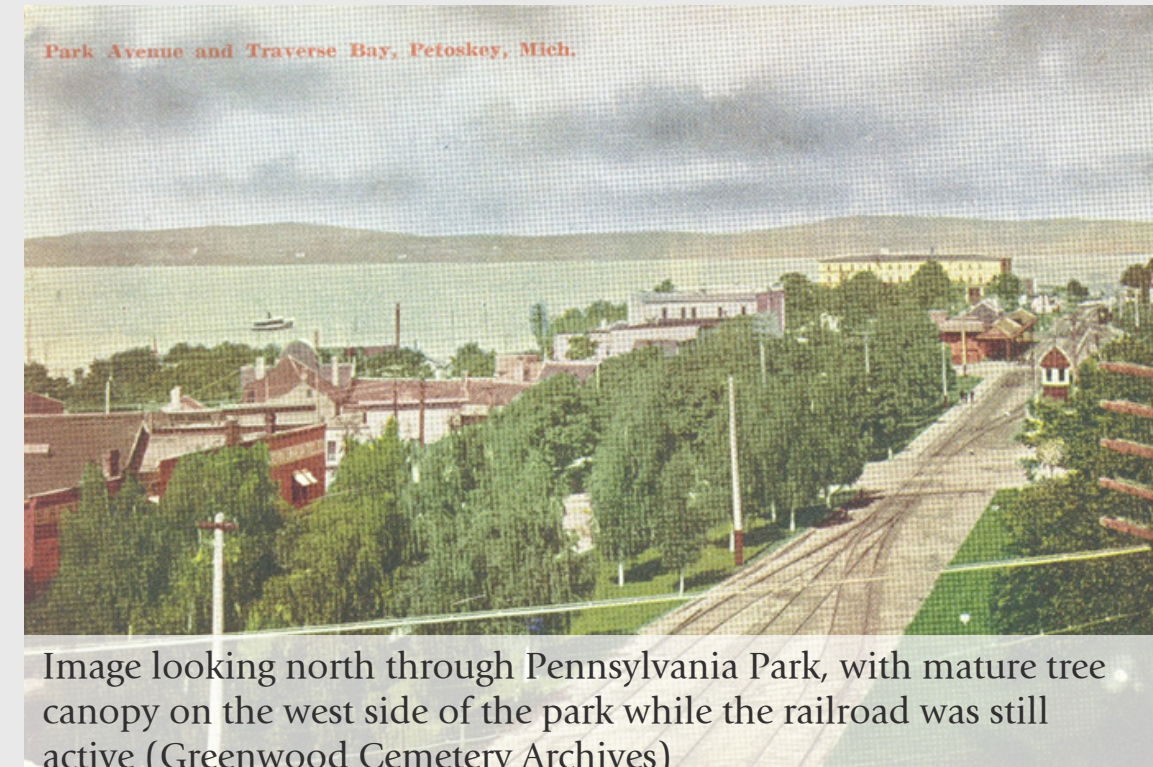
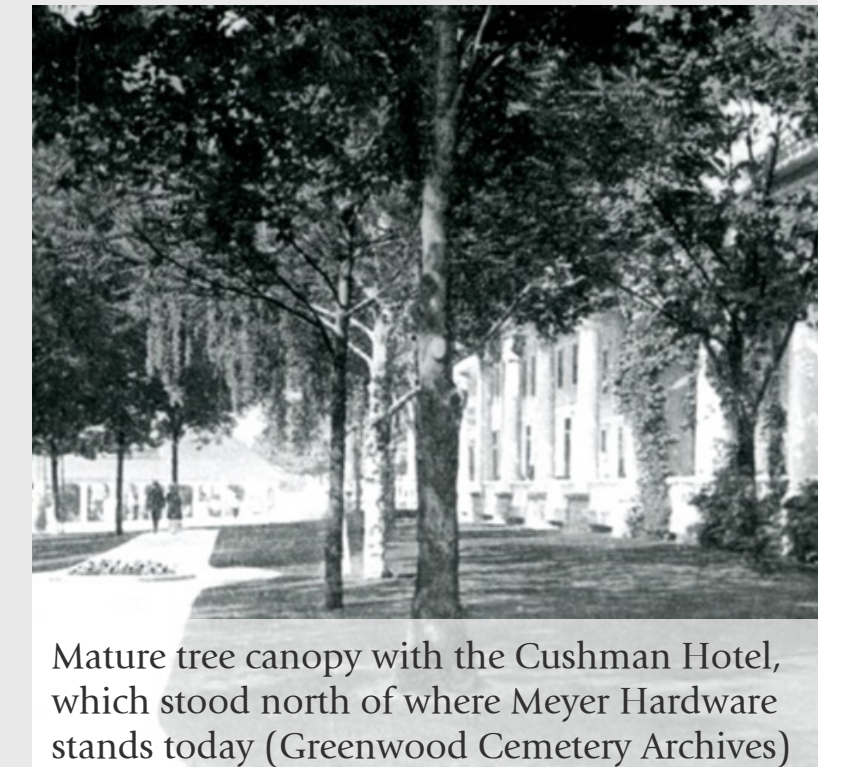


Image looking north through Pennsylvania Park, with mature tree canopy on the west side of the park while the railroad was still active (Greenwood Cemetery Archives)



Mature tree canopy with the Cushman Hotel, which stood north of where Meyer Hardware stands today (Greenwood Cemetery Archives)

6 LAKE STREET MODIFICATIONS



Curbless Street with string lights.



The image on the left illustrates that the street edge for curbless streets is often defined by tactile surfaces and alignment of light poles, signs and other furnishings. The image on the right, from Northville, MI, provides an example of street bollards that are raised and lowered on a regular basis to allow for street closures.

